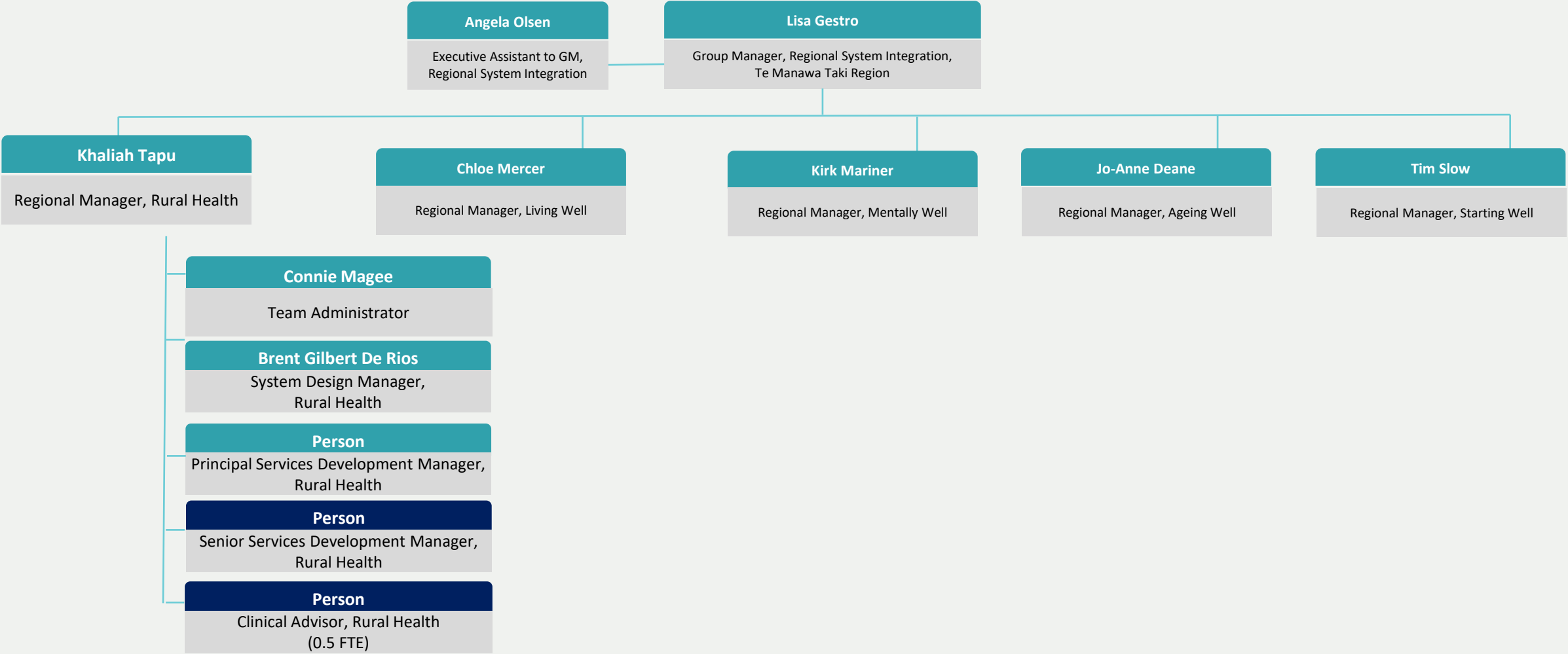




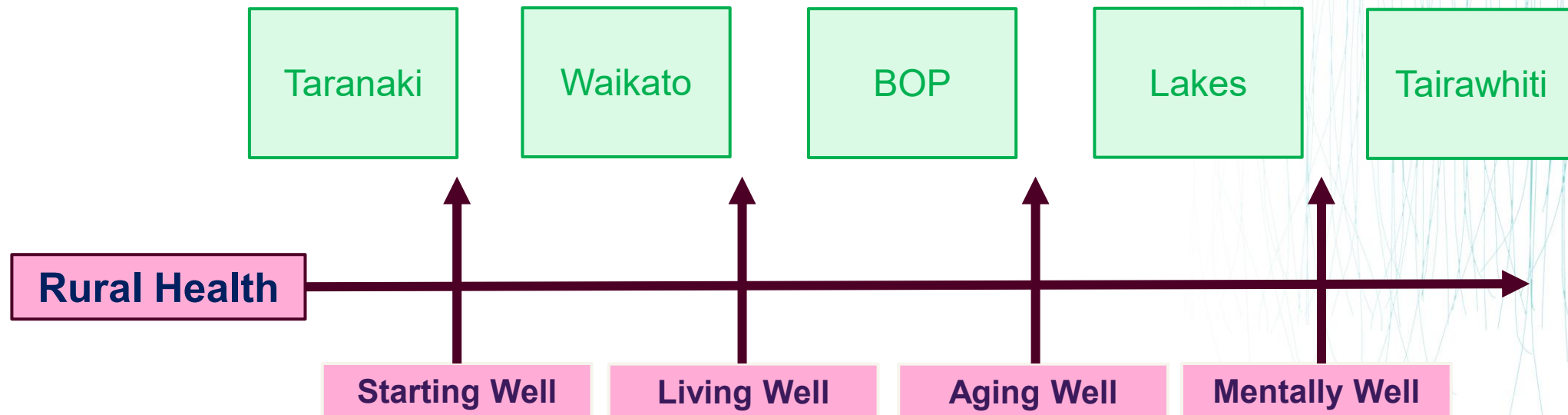
Rural Health Commissioning Team

Te Manawa Taki

Regional System Integration Team



Rural intersecting the wider commissioning teams



RURAL HEALTH & LIVING WELL

Rural Health

Rural Health

Rural Hospitals

Travel & Accommodation Services

Planned & Unplanned Care

Planned Care

Palliative Care

Radiology

Laboratory

Women's Health

Cancer

Hospitals in the home

POAC / EPC

Acute Flow

Telehealth

Urgent & After Hours

Primary Care

Primary Care

Pharmacist Services

Reproductive Health

Refugee & Migrant Health

Community NGO's

Long Term Conditions

Primary Care ICT

Comprehensive Primary Care Teams & WF

Ambulance

Air Ambulance

Road Ambulance

Autonomy

Assisted Dying

Abortion Services

National Rural Health Strategy (2023)



1. Considering rural communities as a Priority Group
2. Prevention: paving the way to a healthier future
3. Services are available closer to home for rural communities
4. Rural communities are supported to access services at a distance
5. A valued and flexible rural health workforce

Our Functions the Regional System Integration Team

Procuring and service agreements across all primary and community care services and managing provider relationships

Ensuring funded services are of high quality, within compliance requirements and within budget.

System and service re-design and implementation across the life span in the Region

Developing (inputting into) and implementing the Strategic Regional Road map (Regional Services Plan) for the Life Course across the region.

Implementing regional integration change programmes.

Developing new service and funding models for aged care and community health services across the Life Course in the region.

Sector facing engagements across the NGO funded sector in the Region.

Management of key operational issues that occur across a network of providers across a region and/or a locality.

Effectively managing full regional commissioning budget, including development of that budget in partnership with regional finance partners and tracking against the budget.

Create and maintain strong collaborative relationships across Te Whatu Ora Business units, regional and national commissioning teams, and Te Aka Whai Ora.

Person-centred way of understanding rural investment



- We've inherited a complicated, fragmented funding and contracting system.
- Rural hospitals are one mechanism for delivering services to rural communities. PHO, NGO, and Te Whatu Ora also contribute to the mix.
- How funding 'lands' in rural communities does not appear to be equitable.
- Funding and contracts haven't been explicitly designed to support sustainable rural models of care.
- You are significant, critical providers in your community, and also not the only providers.

On the horizon

National Rural
Clinical Health
Telehealth
Services

Rural
Recruitment
Service &
Locum Support

Review of
PRIME

Rural Hospital
Stabilisation

National
Transport
Assistance

Bus subsidy